



Master of Science (MSc)

[Impact Entrepreneurship

IT ALL STARTS HERE

BERLIN | LONDON | MADRID | PARIS | TURIN | WARSAW

ESCP Rankings & Accreditations

Financial Times

#1 Worldwide
Master in Finance 2025

#3 Worldwide
Executive MBA 2025

#5 Europe
European Business School 2024

#7 Worldwide
Master in Management 2025

#10 Europe
MBA in International Management 2025

#10 Worldwide
Custom programmes 2025

#24 Worldwide
Open programmes 2025

FT FINANCIAL
TIMES
Rankings

ESCP Quick facts

The World's

1st

Business School
(est. 1819)

6

European campuses in
Berlin, London, Madrid, Paris,
Turin, and Warsaw and a branch
campus in Dubai

Multi- accredited:

AACSB, EQUIS, EFMD MBA,
EFMD EMBA, 7 European
Higher Ed standards, UK and
Germany Degree Awarding
Powers

11,000

students in degree
programmes representing

135

different nationalities

220

research-active professors
representing over 40
nationalities across our
campuses

6,000+

high-level participants in
customised trainings and
executive education

A comprehensive

portfolio

of 50 programmes: Bachelor in
Management (BSc), Master in
Management, Specialised Masters
(MSc), MBA, Executive Masters,
EMBA, PhD and Executive PhD

150+

academic alliances in
Europe and the world in
50 countries

85,000

active alumni in
over 193 countries



Programme objectives

If you aim to take on pressing global issues as an entrepreneur, at start-ups, or within established companies and industries, the Master in Impact Entrepreneurship provides you with the necessary skills, mindset, and professional network.

The objective is to help values-driven, ecologically & socially responsible entrepreneurs and change makers in developing business models that rethink the way the world does business.

Your European Academic Director



Prof. Dr. Florian Lüdeke-Freund
Chair for Corporate Sustainability
ESCP Berlin Campus



Master in Impact Entrepreneurship (MSc)

This master programme is the right choice if you ...

- Use the tools of business and innovation to address broader social and environmental issues
- Build your own values-based business model, reimagine corporate practices, or act as a change agent within established organisations and industries
- Expand your professional network of those committed to positive social impact: faculty & researchers, fellow classmates, entrepreneurs, and practitioners
- Aim to develop both strategic thinking and practical skills to lead in multicultural, dynamic environments
- Prioritise real-world skills along with academic excellence, and want a recognised degree that opens doors to global opportunities



Key facts

- **Degree:** Master of Science (MSc)
- **Credit points:** 120 ECTS
- **Study retreat:** Berlin and Paris
- **Study retreat:** within Germany
- **Language:** English
- **Duration:** 24 months
- **Start:** September 2026

Why choose this specialised MSc?

- 1. The perfect mix of theory and practice**
Deepen your expertise by learning from world-class faculty and industry practitioners, while gaining real-world experience through a company consultancy project and an internship
- 2. A global experience for a global career**
Develop the adaptability, cultural intelligence, and global outlook that employers seek through our multi-country study model and international community
- 3. Career support and guidance designed around you**
Take advantage of expert career services on every campus, connecting you to leading employers and helping you shape a path that fits your goals
- 4. Nonstop adventures beyond the classroom**
Experience a dynamic student journey shaped by student clubs, networking events, city living, European travel, and cross-campus opportunities
- 5. ESCP's 200-year legacy and worldwide reach**
Founded in 1819 and consistently ranked among Europe's top business schools, we've built a thriving and influential network of 85,000+ alumni across 170+ countries.



Your curriculum

You'll learn through a comprehensive blend of traditional teaching methods (lectures, case studies, research, group projects) and a wide variety of direct applications (workshops, consulting projects, simulations, and company visits, etc.)

All courses are taught in English.



YEAR 1			YEAR 2		
Sept-Dec Term 1	Jan-April Term 2	May-July Term 3	Sept-Jan Term 4	Feb-April Term 5	May-Aug Term 6
BERLIN	PARIS	BERLIN	BERLIN	WORLDWIDE	WORLDWIDE
Foundations of impact entrepreneurship <ul style="list-style-type: none">• Introduction to impact• Introduction to entrepreneurship• Values-based innovation	Impact accounting	Intercultural management & leadership	Advanced research skills	Master Thesis for MSc	Internship or business development project
Strategic management	Entrepreneurship methods	Impact metrics and financing	Choice of 2 electives (vary every year) <ul style="list-style-type: none">• From Idea to Exit: A clean tech startup journey• Serious gaming• Technology entrepreneurship• Quantitative entrepreneurial Finance & private equity• Digital technologies & sustainability• Strategic design thinking		
	Impact finance basics	Business pitching	Company consultancy project		
		Exploring impact entrepreneurship in practice			
Impact Venture Development Project			Company consultancy project		
Language classes					



Spotlight Company Consultancy Project (CCP)

The CCP bridges academic learning with real-world impact. Working in diverse teams guided by an advisor, **you'll tackle real business challenges and deliver actionable recommendations** to companies, creating results you can showcase to future employers.

This intensive project develops highly valued skills: project management, data analysis, strategic thinking, client interaction, and executive presentations. You'll gain authentic consulting experience while making valuable career connections.

Past examples of CCPs include:

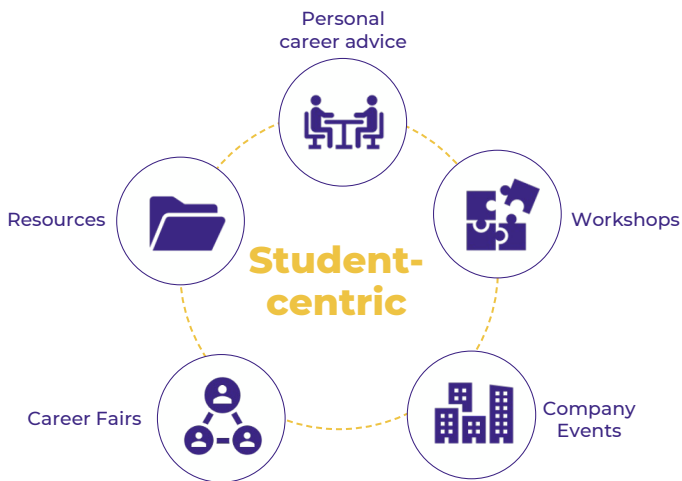
- Market validation and Go-to-market strategy for a sustainable investment AI agent
- Transforming corporate impact reports to meet ESRS/CSRD standards
- German market entry and sales strategy for gluten-free product line
- Business development and sales strategy for CO2 footprint calculation module

ESCP's European Careers Centre

Empowering careers, linking talents

Our extensive Careers Centre is a distinct advantage of studying at ESCP. With **30 dedicated advisors** across **5 campuses**, the Careers Centre provides tailored support to help you define your goals, sharpen your profile, and access global opportunities.

Through personalised coaching, international job fairs, and exclusive networking events, you'll connect with top companies across sectors – giving you a competitive edge that'll accelerate your professional success.



ESCP's Alumni Network

Stay connected and keep growing

From day one of your studies, you'll have full access to our Alumni Association and its global network of over 85,000 alumni across 150+ countries – a dynamic community that opens doors to unparalleled opportunities throughout your entire educational journey and beyond.

"This programme was a chance to learn through an experimental journey and draw lessons from the typical mistakes of previous startups and entrepreneurs – all while focusing on the sustainability sector."

Leopoldo Angelini
Class of 2023



Career opportunities

Innovation and creativity are reshaping business and society. Startups, scale-ups, and established organisations alike are searching for bold thinkers who can create value from sustainability, social, and technological problems.

The Master in Impact Entrepreneurship puts you right at this intersection. You'll gain the tools to launch, grow, or transform ventures that balance profit with purpose, opening pathways in:

- **Entrepreneurship & startups:** Build your own business or join an early-stage venture, designing products, services, and models that address pressing environmental and social needs while scaling sustainably
- **Corporate innovation:** Drive intrapreneurship within established companies, developing new business lines and practices that align sustainability with competitiveness and long-term value creation
- **Consulting:** Support organisations in innovating for sustainability by advising on new business models, growth strategies, and transformative projects that deliver measurable impact
- **NGOs & social enterprises:** Lead initiatives that merge social mission with entrepreneurial thinking, expanding the reach of impactful projects in both local and global contexts
- **Investment & venture capital:** Help channel capital toward responsible businesses and pioneering ideas, shaping a new generation of sustainable entrepreneurs



Job titles of some of our graduates include:

Sustainability Consultant – Partnerships & Social Innovation Manager
– Venture Architect – Junior Corporate Development Manager –
Entrepreneur in Residence – Managing Director – Project Manager
– Venture Developer – Impact Manager – Packing Strategy Manager –
Manager for Circular and Sustainable Products

Where will you study?

The Master in Impact Entrepreneurship brings you to two of Europe's most exciting capitals: Berlin and Paris. Studying in these cities allows you to learn directly from environments that are actively shaping the future of sustainability, innovation, and responsible business.



Berlin, Germany

Europe's innovation hub

Primary study location

Berlin is Europe's leading innovation hub, set apart by its startup scene and advances in green tech, sustainable food systems, and circular economy. Home to numerous social impact enterprises, NGOs, and research institutes, Berlin creates an ecosystem where students can witness how entrepreneurial thinking is reshaping traditional approaches to environmental and social challenges.



Paris, France

Global sustainability leader

One term

Paris blends global policy leadership with a dynamic sustainability scene. Alongside institutions like the OECD and UN Environment Programme, the city hosts startups and forward-thinking companies in fashion, luxury, and energy. Students can observe firsthand how established industries and innovators alike are embedding sustainability into strategy, operations, and creative solutions for tomorrow.

Living sustainably in Berlin and Paris

Both cities enable you to embrace a sustainable lifestyle, with excellent public transport and biking infrastructure, a culture of buying locally and second-hand, and more. City initiatives and government investment are accelerating the transition toward carbon neutrality. Additionally, their diverse international communities and vibrant cultural scenes create an inspiring environment for collaboration, creativity, and intercultural exchange.

Kickstart your career in Europe

Graduates of this master programme automatically qualify for an 18-month residence permit in Germany for which no employer sponsorship is needed.

"By bridging research, education and real-world impact, we strive to take responsibility for creating a viable, carbon-neutral and fairer economy and society."

Prof. Gorgi Krlev
Associate Dean of Sustainability



Sustainability, responsibility and ethics at **ESCP Business School**

When you join the **Master in Impact Entrepreneurship**, you become part of a school that is shaping the next generation of leaders driving environmental and social progress in business, political institutions, and civic organisations.

ESCP takes action by:

1. Setting the standard across the board

We ensure 100% of our students develop literacy on climate issues and planetary limits—creating a generation of leaders who approach business in a responsible way.

2. Advancing the field

Our dedicated sustainability department produces transformative research across key areas like circular economy and sustainable business models, and translates insights into cutting-edge teaching.

3. Leading global conversations

We prioritise a wide variety of research and foster thought leadership that influences business, government and communities.

4. Mobilizing our community

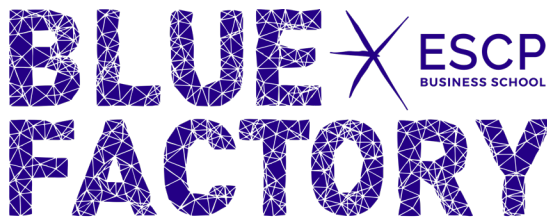
Students, alumni, staff, and industry partners actively collaborate on tangible solutions within the school that create change in our campus cities and beyond.

5. Amplifying impact through partnerships

We strengthen our influence by collaborating with leading institutions and organisations to social and environmental challenges at scale.



The Blue Factory Your launchpad for impact



COLLABORATION • COMMUNITY • EUROPE • INNOVATING FOR SOCIETY

As an ESCP student, you gain access to the Blue Factory, ESCP's in-house incubator that supports students as well as alumni in their entrepreneurial ventures.

Whether you're exploring if entrepreneurship is right for you, refining an early-stage idea, testing your first minimum-viable-product, or ready to scale, the Blue Factory offers tailored programmes designed to meet you where you are. You'll benefit from:

- **1:1 coaching and mentoring** from experienced entrepreneurs and industry experts
- **Funding opportunities & grants**, including Germany's EXIST programme for tech and sustainability-focused teams
- **A powerful community** of 12,000+ entrepreneurial alumni and peers across 5 cities
- **Workshops, masterclasses, demo days, and networking events** that connect you with users, investors, and changemakers

With six unicorns already in its portfolio, the Blue Factory is a lifelong entrepreneurial community, supporting ESCP founders well beyond graduation as they scale ideas into ventures that make a difference for people and the planet.

Admission requirements

- A Bachelor degree with a **minimum of 180 ECTS**
- A university background preferably in management, economics, social sciences, or engineering; interest in business development; an entrepreneurial / intrapreneurial profile
- Fluency in English: TOEFL, TOEIC, IELTS scores or English test on campus
- 0-4 years of full-time work experience

2026 fees

For those entering in September 2026, the fees for the two-year programme are as follows:

- Tuition fees: € 15,500 € per year
- Service fee: € 1,650 per year

All applicants are automatically considered for the ESCP Berlin Global Excellence Scholarship, which covers 10 % of total programme tuition fees (excluding service fees). To be considered, applications must be submitted by the first three deadlines.

Please consult our website for the latest updates on fees, scholarship requirements, and deadlines.

How to apply

1



ONLINE APPLICATION

WWW.ESCP.EU/MIE

2



PROFILE EVALUATION

3



PERSONAL INTERVIEW
IF ELIGIBLE

Your contact



Claire Siegel

Recruitment and Admissions
msc.impactentrepreneurship@escp.eu

WhatsApp +49 (0)152 099 36 535

www.escp.eu/mie



Master of Science (MSc) Impact Entrepreneurship

ESCP benefits from the best **international accreditations**.



AACSB
ACCREDITED



EQUIS
ACCREDITED



EFMD | **MBA**
ACCREDITED



EFMD | **EMBA**
ACCREDITED

Each of our European and international campuses benefits from **national recognition** in higher education.

BERLIN

Heubnerweg 8 – 10
14059 Berlin, Deutschland

LONDON

527 Finchley Road,
London NW3 7BG, United Kingdom

MADRID

Arroyofresno 1
28035 Madrid, España
Maria de Molina 4
28006 Madrid, España
Navalmanzano 6
28035 Madrid, España

PARIS

6-8, av. de la Porte de Champerret
75017 Paris, France

3, rue Armand Moisant
75015 Paris, France

TURIN

Via Andrea Doria 27,
10123, Torino, Italia

WARSAW

c/o Kozminski University,
International Relation Office,
57/59 Jagiellońska St.
03-301 Warsaw, Poland

BRANCH CAMPUS DUBAI

DIFC Academy Dubai International Financial Center, Dubai, UAE