

Summary Carbon footprint Assessment

Paris Campus – 26.06.2020

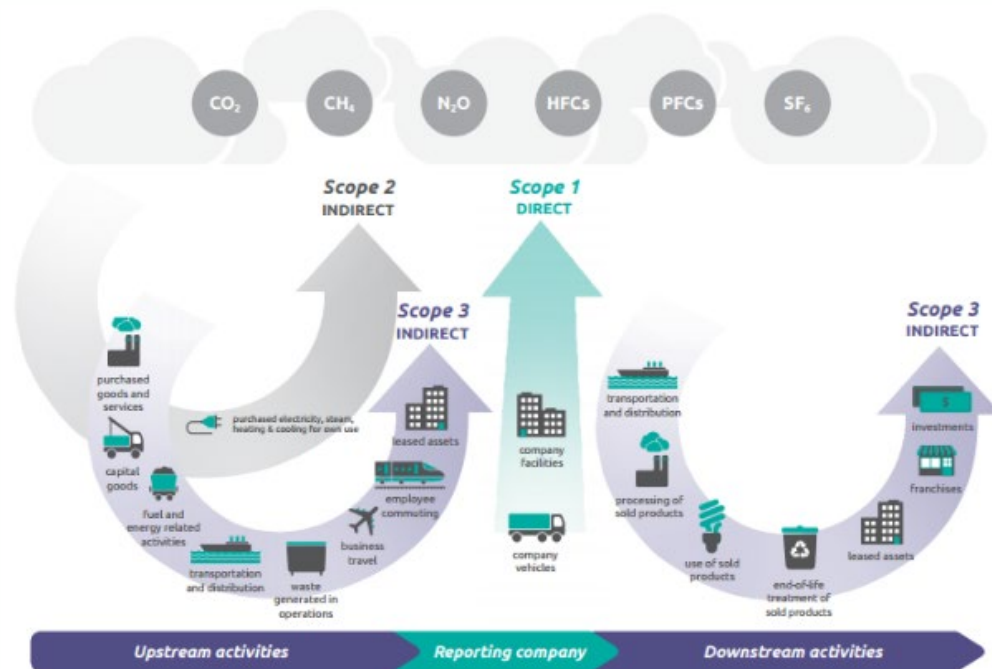


IT ALL STARTS HERE

BERLIN | LONDON | MADRID | PARIS | TURIN | WARSAW

Ambitions and basis for the Carbon Footprint

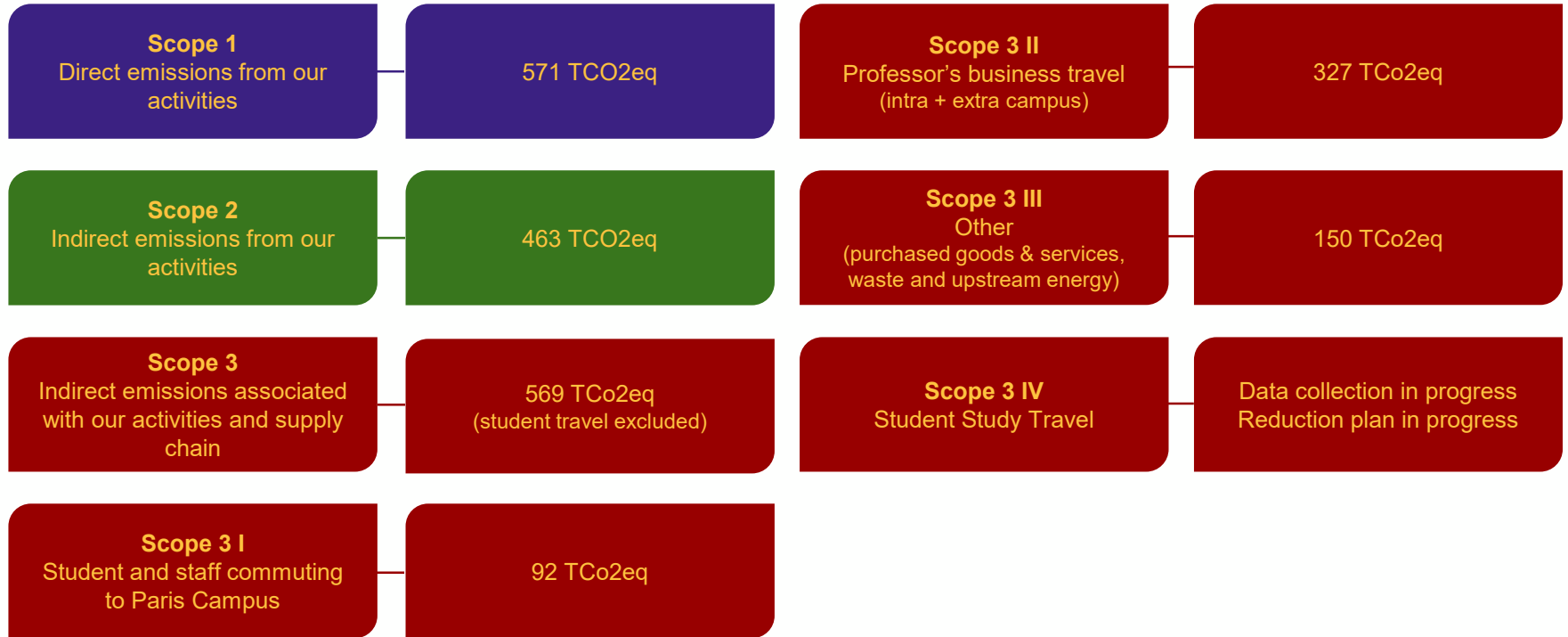
- Use of the GhG Protocol as a tool to calculate the scopes
- Year: 2019
- All 3 scopes
- Two paris campuses only
- Based on MSc student project for data collection and results checked by an external consultancy specialised in carbon footprint



Context

- Issue with some data gathering because of pandemic.
- Next carbon footprint will be at a federal level

Results



Action plan

1. Regular review of the Scope 1, 2, 3
2. Intercampus student travel calculation and action plan in progress
3. Awareness raising
4. By scope :

Reduction of scope 1 emissions through renovations of heating system and insulation

Reduction of scope 2 emissions through use of energy efficient IT, lightbulbs and renovations

Reduction of scope 3 emissions by prioritizing purchasing green IT, Reducing plastic waste and revision of annual research fund conditions to limited business travel and prioritising train

More information...

escp.eu/ethics-responsibility-sustainability



IT ALL STARTS HERE

BERLIN | LONDON | MADRID | PARIS | TURIN | WARSAW